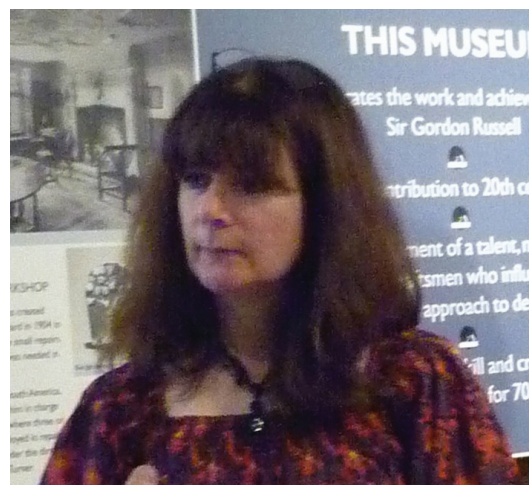


MUSEUM STAFF CHANGES

Sadly we have to say goodbye to Jennifer Pieperiet who has helped the GRDM over the last three years become a place to visit. Her enthusiasm, all round skills and dogged determination will be missed. She has been responsible for the improved range of locally crafted items now on sale in the museum shop, and she curated our very successful 2013 textile exhibition.

Although she had to resign to devote more time and support to her family we hope to be able to call on her curatorial expertise when required. Alexia Monroe, former Clerk to Blockley Parish Council, has stepped forward to take on the post of Museum Manager, enabling a smooth handover period. We hope that you get the opportunity to visit the Museum and meet her.



Alexia is looking forward to arranging a tour for your group so please contact her to make your booking – tel: 01386 854695 or email: grussellmuseum@btconnect.com

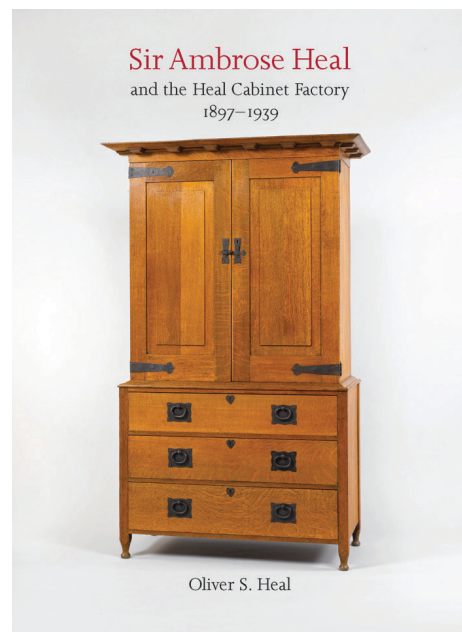
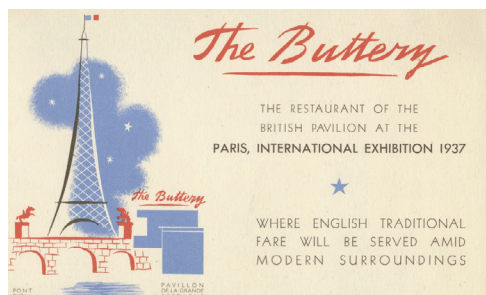
TALKS PROGRAMME



The first meeting in our 2014 session will be held on Monday 3 March 2014 at 3.30pm when former GR craftsman, Martin Blakeman, will give his view of the work and influence of Gordon Russell.

Alan Powers, the author, lecturer and authority on 20th century design, will be coming to the GRDM at 4pm on Mon 14 April 2014 to consider 'A pleasant, happy, alive sort of place': Britain on show in the 1937 Paris Exhibition.

Oliver Heal will be visiting the GRDM at 4.00pm on Monday 19th May 2014 to give a talk on his grandfather, Sir Ambrose Heal and the Heal Cabinet Factory 1897-1939.



Admission: £10 for each talk, payable at the door (includes glass of wine). The upstairs gallery only holds 30 so please email grdmuseum@gmail.com if you wish to reserve a place.

AMBROSE HEAL CHAIR ACQUIRED BY THE V&A MUSEUM OF CHILDHOOD

Dating from 1901 this rare example of a high quality design for a child was commissioned by Joseph Angus for his youngest child, Joan, when she was five years old. Ambrose Heal designed a domed oak chair with an ecclesiastical feel and decorated it with inlay work depicting winged cherubs, lily and rose motifs. It is believed that Joan's aunt, Christine Angus, wife of Walter Sickert, designed the decoration.

The Museum of Childhood, Cambridge Heath, London E2 9PA, is free and open daily 10.00-17.45. Nearest tube: Bethnal Green.



EARLY GORDON RUSSELL DESIGN



On his way home from a Welsh auction recently, Burford Furniture Dealer David Pickup made a detour via the GR Museum. Armed with a new acquisition under his arm, an early GR 1923 Oak Stool with interlaced leather seat, he asked the Curator if he could take a look at the archives. After searching through the GR Stool photographs, they found that it was a variation on Design Number: 50.

The pretty Arts & Crafts style stool, bore the early metal label "Russell & Sons, Broadway" and was in very good condition, Mr Pickup thought that it might have originally come from the Lygon Arms.

VOLUNTEERS NEEDED



Without our volunteer team the Gordon Russell Design Museum would need to close its doors to visitors.

With visitor numbers rising and an increase in school parties coming to see the collections, as part of their design and technology course, we need more volunteers to supplement our excellent team.

Do you know anyone who may be interested in volunteering, even for just a few hours each month? Please contact the Museum's Manager, Alexia Monroe, for more information or to pass on contact details.